

JOSKIN

BEV CHOPPERS

www.joskin.com

OPEN SPACES CARE

Clean and ventilated cut

Strength and reliability

Protected components



**Working
width from
1,30 to 1,60 m**

JOSKIN

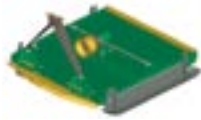
Strength of experience

JOSKIN

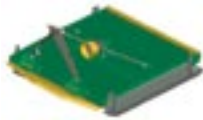
www-joskin-com

RANGE OF OPEN SPACES CHOPPERS

Models of choppers



BEV 130 C1



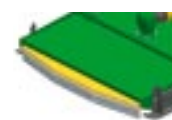
BEV 160 C1



Standard rotor:
3 blades



Front
chains



Rear chains

Type	Position	Nr. rotors	Nr./Type blades	Mech. power min/max (hp)	Nr. discs std/max	Working width (mm)	Transport width (mm)	Weight (Kg)
BEV/130/C1	Rear / Partly offset	1	3/TR	12/60	0/1	1300	1600	180
BEV/160/C1	Rear / Partly offset	1	3/TR	18/60	0/1	1600	1900	280

NB: for larger working width or higher power, ask for our "pasture toppers and choppers" and "fallow choppers" folders



The new BEV chopper is derived from the traditional agricultural choppers and especially designed to take care of open spaces. It is fitted with one single rotor mounted on a speed-increasing gearbox that drives 3 removable and retractable floating blades (which retract when striking into too hard obstacles).

The machine is driven at 540 rpm by a P.T.O.-shaft with shear bolt (overrun clutch in option).

The two models of this BEV range are suitable for narrow tractors with limited power (from 15 to 35 HP).

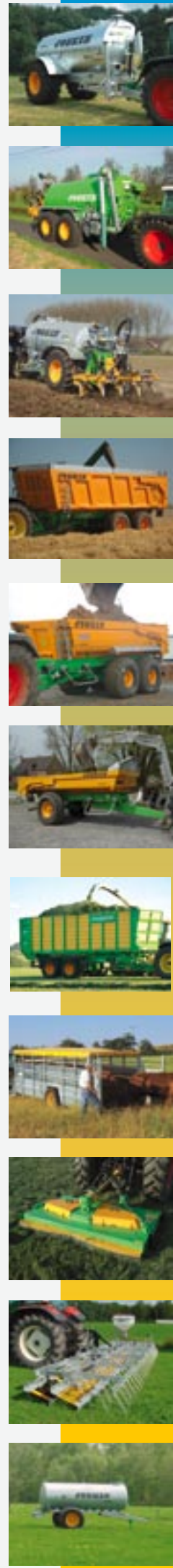
The open spaces choppers are standard fitted with 2 wide skids (150 mm). Besides, thanks to their pivoting hitching gear (compatible with Ø 22 mm and Ø 28 mm), they can be hitched with an offset on the left or on the right (by successive stages of 75 mm, up to 150 mm on BEV/130/C1 and 225 mm on the other model). The hinged rear protection plate is also part of the standard equipment.

The front and rear protection chains, as well as the central disc protecting the rotor, are available in option.

rue de Wergifosse, 39
4630 Soumagne - BELGIUM
Exit 37 Herve - Soumagne

Tel.: +32 (0) 43 77 35 45
Fax: +32 (0) 43 77 10 15
E-mail: info@joskin.com

Your local **JOSKIN** partner



©JOSKIN 08-2006. No-contractual document. Data can change without notice. The pictures don't necessarily correspond to standard equipment.