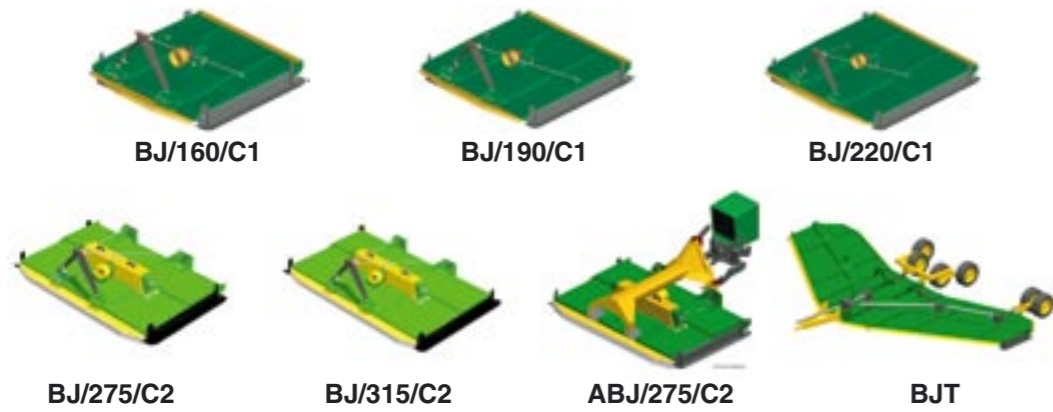


# JOSKIN

## RANGE OF FALLOW CHOPPERS



Type	Position	Nr. rotors	Nr./Type blades	Mech. power min/max (hp)	Nr. discs std/max	Working width (mm)	Transport width (mm)	Weight (Kg)
BJ/160/C1	Rear / Partly offset	1	3/BR	40/90	1	1600	1900	380
BJ/190/C1	Rear / Partly offset	1	3/BR	50/90	1	1900	2200	480
BJ/220/C1	Rear / Partly offset	1	3/BR	60/90	1	2200	2500	600
BJ/275/C2	Rear	2	6/BR	75/125	2	2730	2990	680
BJ/315/C2	Rear	2	6/BR	75/125	2	3130	3390	
ABJ/275/C2	Front	2	6/BR	75/125	2	2730	2990	770

NB: for lighter work or higher power, ask for our "open spaces choppers" or "pasture toppers and choppers" folders



rue de Wergifosse, 39  
4630 Soumagne - BELGIQUE  
Exit 37 Herve - Soumagne

Tel.: +32 (0) 43 77 35 45  
Fax: +32 (0) 43 77 10 15  
E-mail: info@joskin.com

Your local **JOSKIN** partner

# JOSKIN

## BJ CHOPPERS



### FALLOW CARE

Clean and ventilated cut  
Strength and reliability  
Protected components

Working width from 1,60 to 3,15 m

# JOSKIN

Strength of experience

www.joskin.com

©JOSKIN 08-2006. No-contractual document. Data can change without notice. The pictures don't necessary correspond to standard equipment.

J98761397

www.joskin.com

## CHOOSING JOSKIN MEANS

## SECURING YOUR FUTURE

**JOSKIN** has revised and extended its range of fallow choppers with vertical axis/axes in order to meet your ever increasing requirements. If you ever wish to mow the left-overs in your pastures, to chop your fallows or to clear small shrubs (max. 30 mm), **JOSKIN** offers you its whole technical know-how thanks to especially designed tools.

A specific model must be chosen within our range of **JOSKIN** fallow choppers according to the area to be chopped, the tractor power, the aimed output and the type of ground. The fallow choppers range from the 1,60 m basic model to the 8,4 m wide model. Finally, a choice must be made between the rear and front versions.

### A safe and highly ventilated cut



BJ/160/C1



BJ/275/C2



BJ/160/C1



BJ/275/C2

**JOSKIN** has designed removable and retractable floating blades (with double articulation by intermediate rod) in order to ensure the cutting quality. These blades retract when striking into too hard obstacles and are protected from foreign bodies by circular blade-carriers. This technical solution spares the transmission and therefore optimally protects your tractor against shocks. On uneven ground, the machine and the vegetation are moreover protected by standard Ø 330 mm discs.

Thanks to the large free space between the blades and the chassis, the air can flow freely and the chopped matter is mixed without slowing down or being blocked.

The shape of the blade has been specially designed to suck the vegetation upwards and to cut it smoothly and efficiently: this is the HIGHLY VENTILATED cut.

### An easily adjustable height



Thanks to the skids of the **JOSKIN** choppers, it is possible to set the cutting height in 6 different positions between 40 and 150 mm (according to your own needs). To that end, the supports of the skids are fitted with bolts. These wide skids make the machine stable and protect the vegetation while providing the machine with an outstanding carrying capacity.

The long lifetime of the machine is ensured by the steel quality under the skids (HARDOX450), even when it is used on particularly abrasive grounds.

The choppers with at least 2 rotors have the pre-equipment required to be fitted with large supporting wheels (Ø 400 x120 mm) in option, so that the machine properly leans on the ground and is perfectly guided. The wheels are made of steel in order to prevent the puncture problems that often turn up in this type of working conditions.

In option, the single-rotor choppers can be fitted with a galvanized rear aerator.

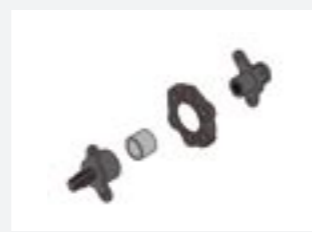


### A smooth and protected transmission



The machine is driven at 540 (1 rotor) or 1000 rpm (at least 2 rotors) by a P.T.O.-shaft standard fitted with a shear bolt. The fallow choppers with at least 2 rotors are also standard fitted with an overrun clutch integrated into the box. In case of rough vegetation, it is advisable to choose a slip clutch for choppers with at least 2 rotors or an overrun clutch for single-rotor choppers, so that the transmission parts of the machine and the tractor are better protected.

On choppers with at least 2 rotors, torsion couplings are mounted on the transmission shafts to further improve the security of the machine and to make the drive smoother. As they are made of rubber, they absorb the operating vibrations and the possible shocks.



rubber coupling

All transmission parts of the choppers with at least 2 rotors are protected by a bolted cap.

It is worth noting that all **JOSKIN** choppers have been designed in order to largely prevent water or impurities from seeping into the chassis. The whole structure has been significantly aerated so that there is no water left in the cavities, which makes the cleaning operations easier.



Overrun clutch



While constantly looking for technical compromises, **JOSKIN** also pays attention to safety and ease of use. All **JOSKIN** fallow choppers are conforming to the European directives related to the safe use of machines and are in accordance with the corresponding European norms.

**JOSKIN** has made your chopper very easy to maintain so that it can immediately be used after being set aside during a whole season.

### Trailed at the back...

The 3-point hitch allows to carry the machine while driving but, while working, the machine is simply trailed by the 2 lower points, as the 3rd one is floating. Thanks to this special design, the chopper can perfectly follow the ground.



Machine in transport position



Machine in working position

### ...or at the front!



The floating 3rd point of the machine in working position is only retained for double-rotor choppers. These are hitched by means of a central beam that **trails the machine at the front**. The back of the chopper is simply supported by a sliding guide. As a result, the machine can "float" freely on the ground. Besides, the double hitching spring makes the continuous contact on the ground lighter.

### Automatic hitching

The **JOSKIN** fallow choppers can be hitched to all tractors fitted with a standardized 3-point linkage.

The 3-point hitch of the choppers (compatible with Ø 22 mm and Ø 28 mm) can pivot in order to follow the ground unevenness perfectly.

Besides, the single-rotor choppers can be hitched with a max. 225 mm offset on the left or on the right (by successive stages of 75 mm).

The double-rotor choppers have an airtight monocoque chassis with double wall (casing) in order to limit the total weight of the machine while keeping the strength and stiffness provided by the high tensile steel. The single-rotor choppers are fitted with a hinged rear protection plate that has to be replaced by an adapted plate if you want to fix rear protection chains. The standard front protection plate also serves as pre-equipment for protection chains (option). On choppers with at least 2 rotors, the front and rear protection plates are the pre-equipment for the protection chains (option).

