

JOSKIN

JOSKIN

Complete range

Type	No. of animals	Body (m)			Floor (m ²)	Axles (mm) - studs	Brake dimensions (mm)	Brakes	Tyres	Parking stand
		L	w	h						
RDS 5000	7/8	5	2.23	2.10	11.1	90x2066-6S	350 x 90	hydr.	435/45R19.5	wheel
RDS 6000	8/10	6	2.23	2.10	13.4	90x2066-8S	400 x 80	hydr.	435/45R19.5	wheel
RDS 7500/2	10/12	7.5	2.23	2.10	16.7	2x90x2066-8S	400 x 80	hydr.	435/45R19.5	hydraulic
RDS 9000/2	12/14	9	2.23	2.10	20.0	2x90x2066-8S	400 x 80	hydr.	435/45R19.5	hydraulic



BETIMAX RDS 5000



BETIMAX RDS 6000



BETIMAX RDS 7500/2



BETIMAX RDS 9000/2

JOSKIN BETIMAX, a reclining vehicle combining multifunctionality and comfort...

Rue de Wergifosse, 39
B-4630 Soumagne - BELGIUM
E40 - Exit 37 Herve - Soumagne

Tel.: +32 (0) 43 77 35 45
Fax: +32 (0) 43 77 10 15
E-mail: info@joskin.com

Your local **JOSKIN** partner

BETIMAX

RECLINING LIVESTOCK TRAILER

Fully galvanized

Hitching suspension with parabolic leaves

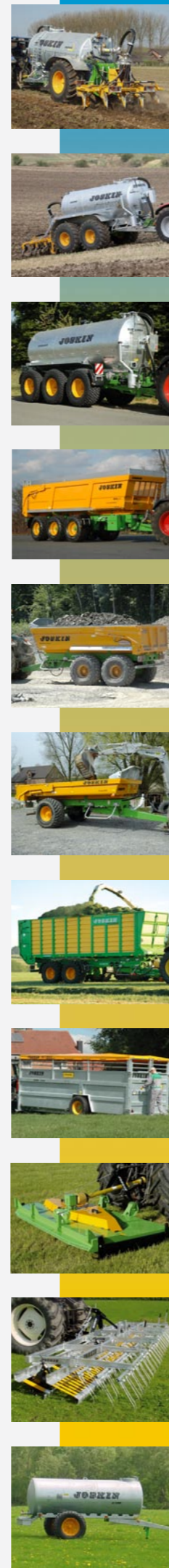
Hydraulically lowered axles

www.joskin.com

4 models from
5 to 9 metres long
Single or double axle

JOSKIN

Strength of Experience



©JOSKIN 07-2009. Non-contractual document. Data can change without notice. The pictures do not necessarily correspond to standard equipment.

J98761216

JOSKIN BETIMAX, TO TRANSPORT YOUR CATTLE SAFELY

The **JOSKIN** BETIMAX livestock trailer is the vehicle you need to transport your cattle safely. It has been designed according to the advice of experienced stock breeders and veterinary surgeons. Let yourself be seduced by its specifications combining safety, strength and comfort.

Monocoque body

The BETIMAX is supported by a tubular chassis. The chassis and the 4 mm thick side plates form a fixed one-piece body which is 120 cm high. All these elements combined ensure a solid and watertight construction.



The upperside walls are bolted to the posts that are fixed into the body.

The BETIMAX is standard fitted with arches improving the stiffness of the body. These arches allow to use, in option, a protective cover on the livestock trailer.

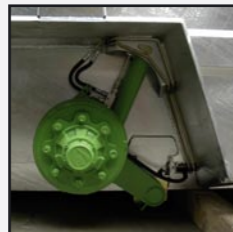
To remind you, the whole BETIMAX is fully galvanized. This surface treatment offers an optimal protection of the steel against the effect

Easy to load



The BETIMAX is fitted with the reclining system. The axle(s) is/are mounted on hydraulic cylinders allowing to lay the trailer down on the ground. The loading and unloading height is therefore limited to 14 cm while the transport height amounts to 63 cm.

Each cylinder is fitted with a safety device preventing the vehicle from falling down if hydraulic hoses come to break: a check valve on single axle and a safety valve with nitrogen ball on double axle. Owing to the safety valve, the oil is still able to flow from one suspension cylinder to the other while the nitrogen ball prevents it from hammering as much as possible.



This reclining system replaces the access ramp, so that no operation is required from the user and the accident risks are limited when loading or unloading the cattle.

Doors

The rear door is made up of two independent shutters that are mounted on hinges and can be set in different opening positions.



The hinges move the doors away from the entrance of the livestock trailer, so that it is opened over the whole width and the doorway is not blocked.

A right inspection gate - which is 80 cm wide - is set at the front of the BETIMAX.



Hitching suspension with parabolic leaves

The driving comfort of the BETIMAX is ensured by a hitching suspension with parabolic leaves. The anchoring point of the drawbar is located under the chassis.



This suspension is of course valid for both high hitching and low hitching. In Germany, the standard equipment includes the high hitching.

Safety and comfort

The floor of the BETIMAX is covered with a soft 3-component resin similar to the one used on international livestock transport lorries. This resin has anti-slip and soundproof properties that turn out to be particularly comfortable for the animals.

The wheel cases form no sharp angles and are high enough to prevent the animals from striding over them and getting hurt. While cleaning, the water and the faeces are flushed out through two draining caps (Ø 2"). The inner edge - conforming to the regulations in force - prevents these faeces from flowing out while driving.

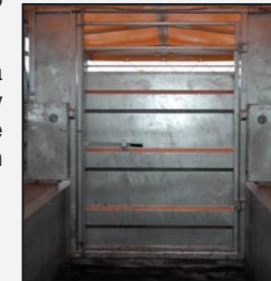


Inner partitions

There are 2 types of inner partitions: the one-part fences and the removable door. Both are fixed to the tubes that are standard mounted along the walls of the body.

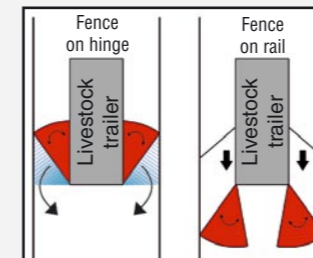
The fences can be positioned over the whole length of the livestock trailer. Extensions are also available, allowing to divide the small cattle into groups.

The advantage of the door is to form a screen over the whole height of the body and the walls. This door slides over the whole length of the livestock trailer, even at the recess of the wheels.



Outer fences

The BETIMAX can also be equipped with side fences that may be either mounted on hinges (3.10 m) or on rails (4 m or 4.50 m according to the models). This option makes it easier to bring the animals together before making them step into the trailer. The first ones can still be fitted with 1.5 m removable extensions (to be fixed at the front of the trailer during transport). The fences are hung on the side walls of the vehicle, thereby ensuring a high safety level during transport.



Other useful equipment

Lighting

In order to comply with the safety regulations and legislation in force, the BETIMAX is fitted with rear lights, a registration plate lighting system and - in option - six side lights. The rear lights are protected by a grate and built-in under the body for an optimal anti-shock protection.

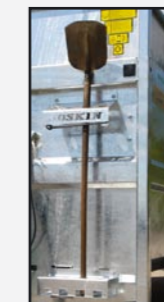


Protection rods

The protection rods above the wheel cases, which are sometimes incompatible with the inner partitions, are also available in option.

Spare wheel

A spare wheel is available in option and is fixed in front of the body.



Tool box

A tool box can be fitted at the front part of the body.

Still in option, the brush holder enables to carry 4 handle tools.

Tyres



305/55R22.5



17.0/50R19.5



435/45R19.5

The BETIMAX is standard fitted with 435/45R19.5 tyres (width: 458 mm; diameter: 911 mm; 4500 kg per wheel at 40 km/h).

Other tyres are of course available in option.

Braking system

In option, dual or air brakes can be mounted on the livestock trailer instead of the standard hydraulic brakes. The air brakes are standard in Germany. The option automatic reverse is available for the RDS 5000 and RDS 6000.

